

Marlborough, MA

57 Main Street
Marlborough, MA 01752



57 Main Street

3,300 SF AVAILABLE FOR LEASE

Prime downtown Marlborough development featuring 92 units, 3,300 SF of retail, and a landscaped courtyard. Just five minutes from I-495, the property enjoys exceptional accessibility and visibility within one of Greater Boston's largest employment hubs—home to leading technology, life science, and manufacturing companies. Its central location and mixed-use design make it an ideal destination for retailers seeking a vibrant, high-traffic setting in a rapidly growing downtown corridor.



NEARBY TENANTS



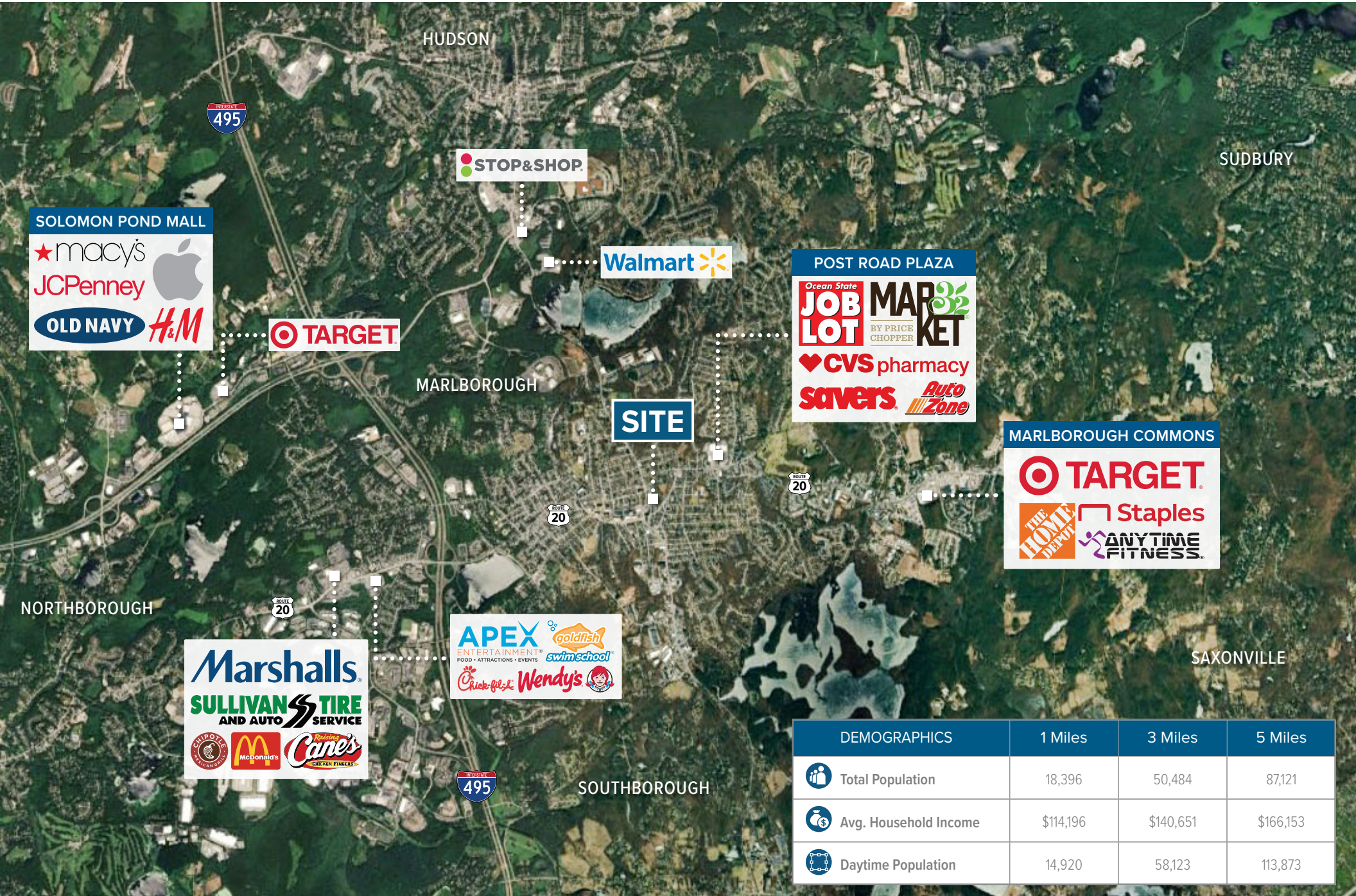
GROSS LEASABLE AREA
3,000 SF



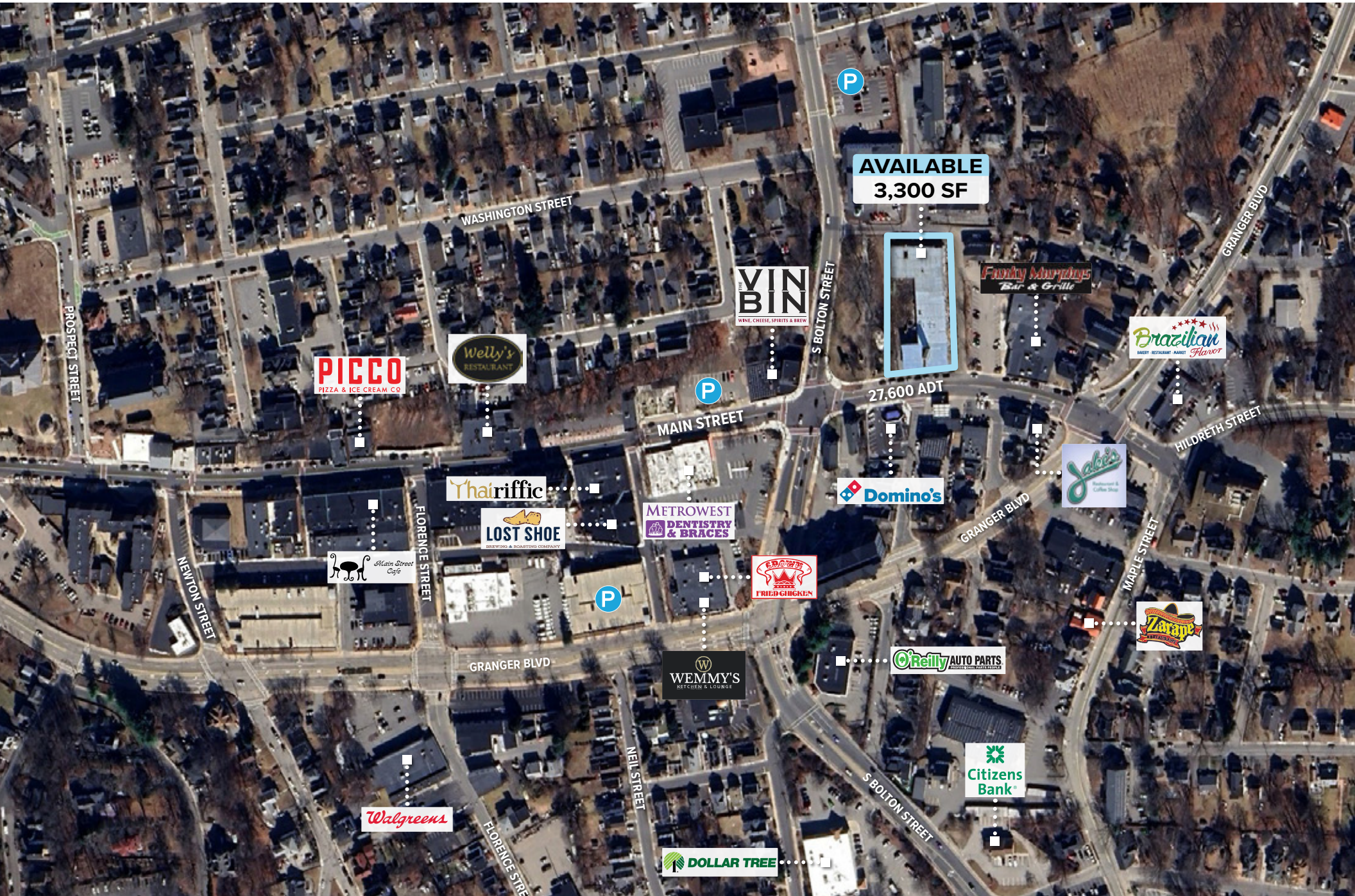
PROPERTY STATUS
3,300 SF AVAILABLE



AVERAGE DAILY TRAFFIC
Main Street: 27,600 ADT



DEMOGRAPHICS	1 Miles	3 Miles	5 Miles
Total Population	18,396	50,484	87,121
Avg. Household Income	\$114,196	\$140,651	\$166,153
Daytime Population	14,920	58,123	113,873



AVAILABLE
3,300 SF

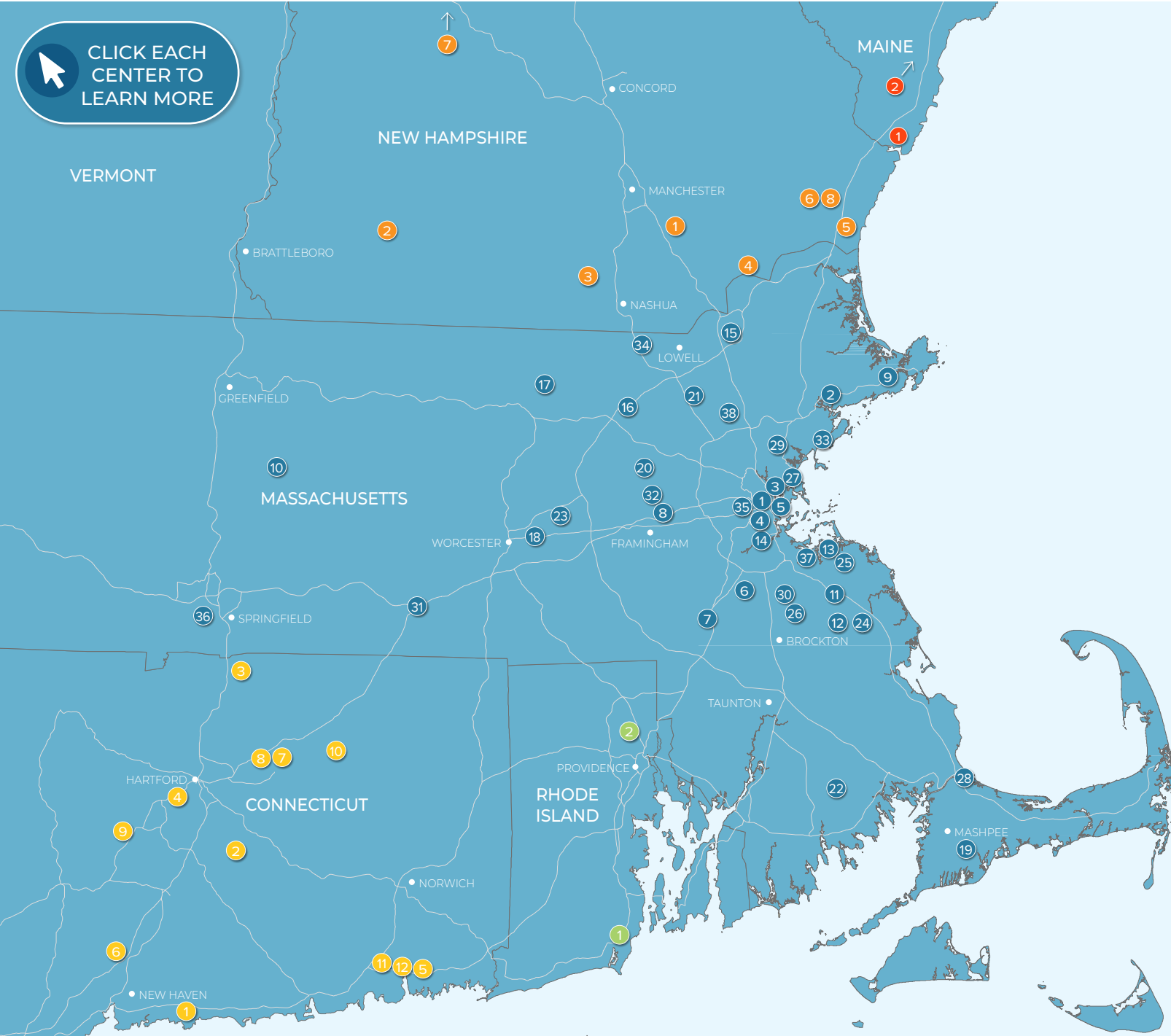
Marlborough, MA

57 Main Street
Marlborough, MA 01752



The information provided herein has been obtained from sources believed reliable. While we do not doubt its accuracy, we make no representation, guarantee or warranty, express nor implied, about the accuracy or completeness of this information. It is your responsibility to independently confirm this information. You and your advisors should conduct a careful, independent investigation of the property to determine, to your satisfaction, the suitability of the property for your needs.

CLICK EACH CENTER TO LEARN MORE



ME/NH/CT/RI

- 1 2 Gorges Road, Kittery, ME
- 2 300 Gallery Blvd, Scarborough, ME
- 1 Hood Commons, Derry, NH
- 2 Keene Plaza, Keene, NH
- 3 Lordens Plaza, Milford, NH
- 4 Stateline Plaza, Plaistow, NH
- 6 Seabrook Commons, Seabrook, NH
- 6 Stratham Crossing, Stratham, NH
- 7 Powerhouse Plaza, West Lebanon, NH
- 8 Parkman Brook Shopping Center, Stratham, NH
- 1 Branhaven Plaza, Branhaven, CT
- 2 East Hampton Plaza, East Hampton, CT
- 9 Freshwater Commons, Enfield, CT
- 4 West Farm Shopping Center, Farmington, CT
- 5 Groton Square, Groton, CT
- 6 Hamden Mart, Hamden, CT
- 7 Big Y Plaza, Manchester, CT
- 6 Plaza at Burr Corners, Manchester, CT
- 9 Shop Rite Plaza, Southington, CT
- 10 Storrs Center, Storrs, CT
- 11 Cross Roads Shopping Center, Waterford, CT
- 12 Waterford Plaza, Waterford, CT
- 1 Salt Pond Shopping Center, Narragansett, RI
- 2 Mineral Springs Ave, North Providence, RI

MASSACHUSETTS

- 1 Continuum, Allston, MA
- 2 North Shore Crossing, Beverly, MA
- 3 Avalon North Station, Boston, MA
- 4 Brigham Circle, Boston, MA
- 5 Flats on D, Boston, MA
- 6 Village Shoppes of Canton, Canton, MA
- 7 Patriot Place, Foxborough, MA
- 8 Nobscot Village, Framingham, MA
- 9 Gloucester Crossing, Gloucester, MA
- 10 Russell Street Pad Site, Hadley, MA
- 11 Hanover Crossing, Hanover, MA
- 12 Shaw's Plaza, Hanson, MA
- 13 Launch at Hingham Shipyard, Hingham, MA
- 14 Hyde Park Plaza, Hyde Park, MA
- 15 Plaza 114, Lawrence, MA
- 16 The Point, Littleton, MA
- 17 Lunenburg Crossing, Lunenburg, MA
- 18 57 Main Street, Marlborough, MA
- 19 South Cape Village, Mashpee, MA
- 20 Victory Plaza, Maynard, MA
- 21 Pad Site, North Billerica, MA
- 22 Towne Center, North Dartmouth, MA
- 23 Free Standing Restaurant, Northborough, MA
- 24 Pembroke Center Plaza, Pembroke, MA
- 25 The Grove at Plymouth, Plymouth, MA
- 26 Randolph Shopping Center, Randolph, MA
- 27 Beachmont Square at Suffolk Downs, Revere, MA
- 28 Stop & Shop Plaza, Sandwich, MA
- 29 Hilltop Avalon Saugus, Saugus, MA
- 30 Walgreens Plaza, Stoughton, MA
- 31 The Center at Hobbs Brook, Sturbridge, MA
- 32 Meadow Walk, Sudbury, MA
- 33 The Shops at Vinnin Square, Swampscott, MA
- 34 The Edge District, Tyngsborough, MA
- 35 Stop & Shop Plaza, Watertown, MA
- 36 Westfield Shops, Westfield, MA
- 37 1515 Commercial Street, Weymouth, MA
- 38 Wilmington Crossing, Wilmington, MA